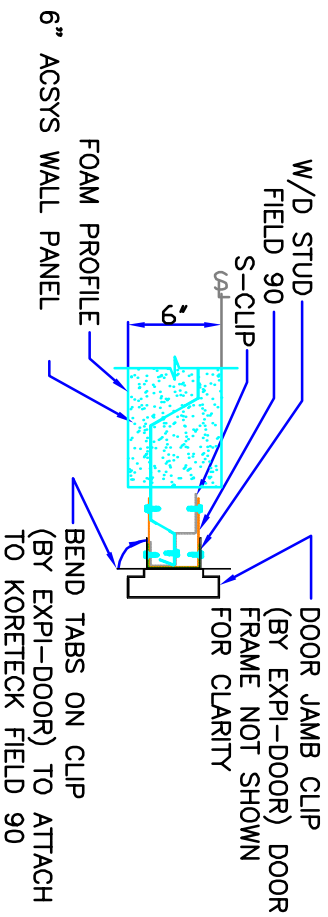
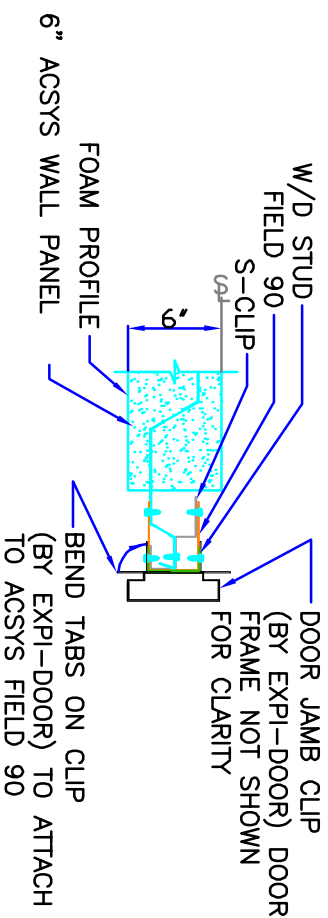


SYNTHETIC STUCCO FINISH

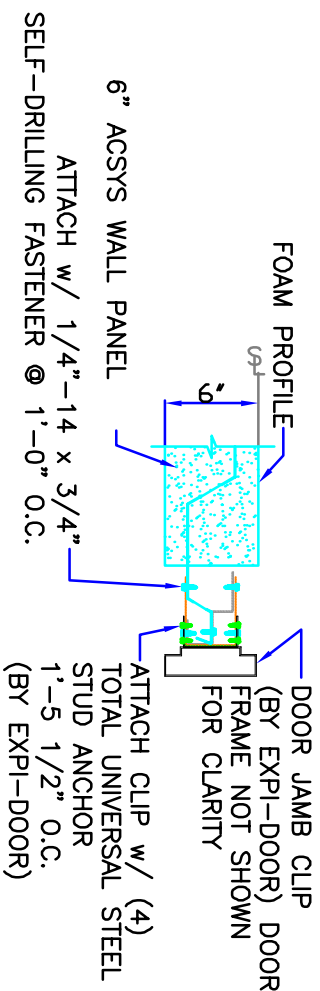


**STEP #1 : POSITION DOOR JAMB CLIP**  
 FOLLOW DETAIL D605 FACTORY CUT DOOR  
 INSTALLATION GUIDE PRIOR TO EXPIDOOOR INSTALLATION

4" BRICK FINISH

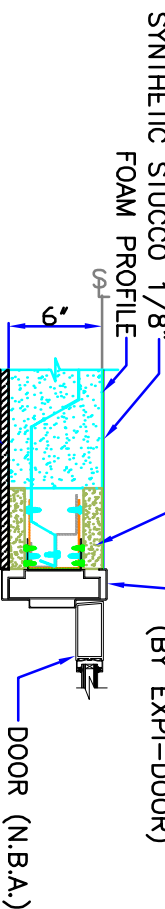


**STEP #1 : POSITION DOOR JAMB CLIP**  
 FOLLOW DETAIL D605 FACTORY CUT DOOR  
 INSTALLATION GUIDE PRIOR TO EXPIDOOOR INSTALLATION



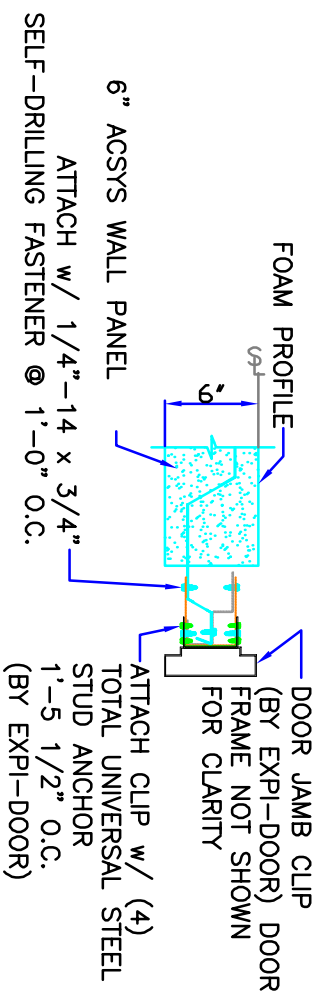
**STEP #2 : ATTACH TO ACSYS**

EPS FILLER BY COATING CONTRACTOR  
 IF NECESSARY (TYP.)



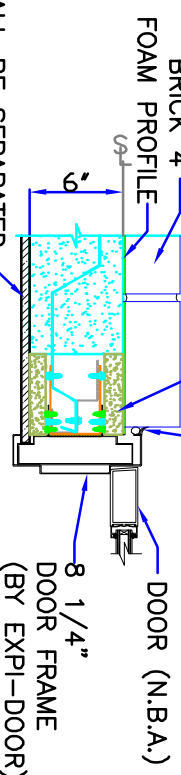
**STEP #3 : SYNTHETIC STUCCO FINISH**

FOAM PLASTIC SHALL BE SEPARATED  
 FROM THE INTERIOR OF THE BUILDING BY AN APPROVED  
 THERMAL BARRIER (SUCH AS 1/2" GYPSUM WALL BOARD)



**STEP #2 : ATTACH TO ACSYS**

EPS FILLER BY COATING CONTRACTOR  
 IF NECESSARY (TYP.)



**STEP #3 : 4" BRICK FINISH**

FOAM PLASTIC SHALL BE SEPARATED  
 FROM THE INTERIOR OF THE BUILDING BY AN APPROVED  
 THERMAL BARRIER (SUCH AS 1/2" GYPSUM WALL BOARD)